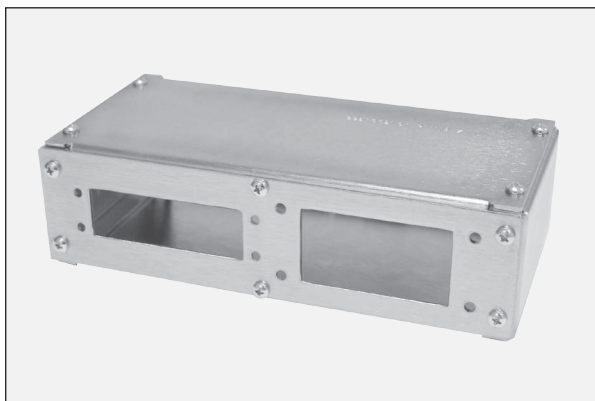
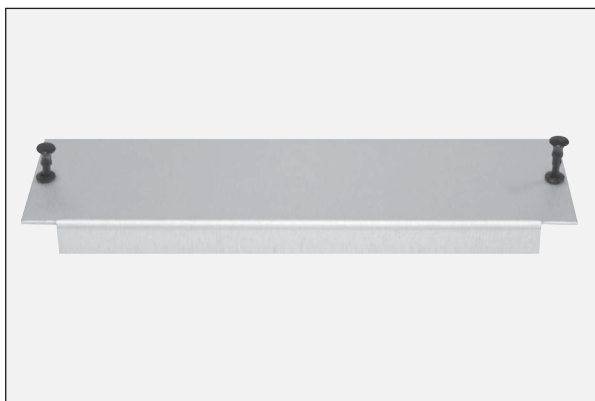


Hot Runner Controller Accessories



Mounting Boxes

Box	Zones	Kit
PTCL=Combination Box (domestic and export)	005 = 5 Zones 008 = 8 Zones 12 = 12 Zones	TB = Terminal Box



Closure (Blanking) Panels

Must be used to cover unused zones in main frames. Supplied with push-pull panel fasteners

Panel	Zones
MFB = Blank	10 = Single Zone

Universal Floor Stand

Panel	Zones
MFS = Floorstand	5812 = Adjustable

Module Replacement Fuses

Catalogue No.	Amps
ABC15	15
A25X30	30
ABC10	10

Insulated Crimp Connectors

Catalogue No.	Amps
HWCC-1	15
HWCC-2	30