

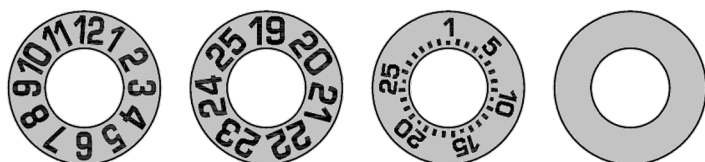
Moulding Date Inserts



Materials: Stainless Steel
Hardness: 50-55 HRC.

Outer Insert

Inner Insert



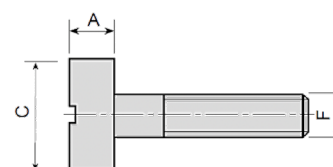
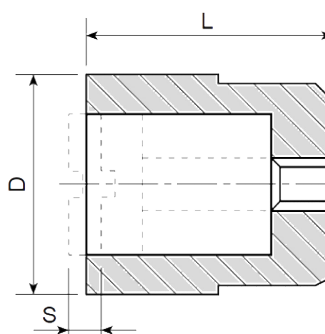
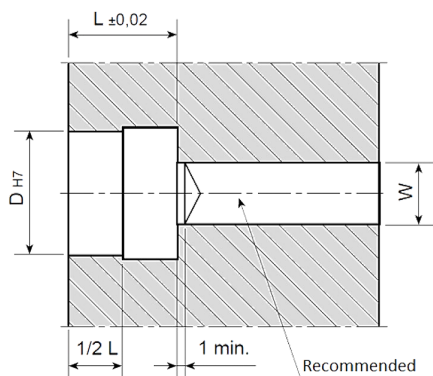
ØD	Month	Year	Day	Blank
4	CCM04	CCA0420AA	CCG04*	CCN04
5	CCM05	CCA0520AA	CCG05*	CCN05
6	CCM06	CCA0620AA	CCG06	CCN06
8	CCM08	CCA0820AA	CCG08	CCN08
10	CCM10	CCA1020AA	CCG10	CCN10
12	CCM12	CCA1220AA	CCG12	CCN12
16	CCM16	CCA1620AA	CCG16	CCN16
20	CCM20	CCA2020AA	CCG20	CCN20

ØD	Year + Arrow	Arrow
4	ICA0420AA	ICN04
5	ICA0620AA**	ICN06**
6	ICA0620AA	ICN06
8	ICA0820AA	ICN08
10	ICA1020AA	ICN10
12	ICA1220AA	ICN12
16	ICA1620AA	ICN16
20	ICA2020AA	ICN20

Installation

Outer Insert

Inner Insert



ØD	L	S	ØW	A	ØC	F
4	8***	0.25	1.4	2	2.2	M1X0.25
5	8	0.20	2	2	3.1	M1.6X0.2
6	8	0.20	2	2	3.1	M1.6X0.2
8	10	0.25	3	2.5	4.4	M2.3X0.25
10	12	0.35	3	3	5.2	M2.5X0.35
12	14	0.35	4	3	6.2	M3X0.35
16	14	0.35	5	3.5	8.2	M4X0.35
20	16	0.35	5	4.5	11	M4X0.35

* CCG04 & CCG05 have numbers only.

** Inner insert dia.6 valid also for outer insert dia. 5.

*** Special date stamps with D=4mm and L=5mm and inner insert with C=2.1 available on request.