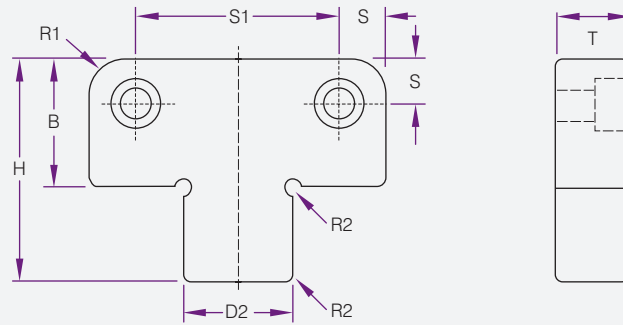
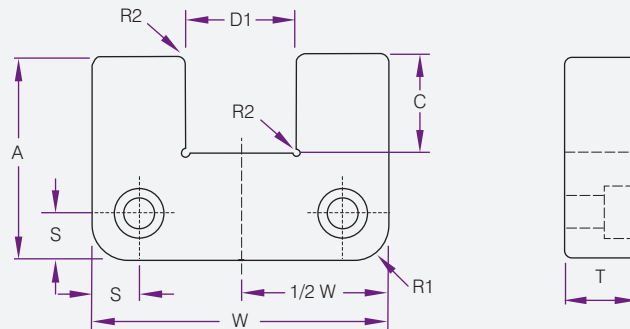




Male: YK30
54~56HRC
Black Oxide Finish



Female: SKD11(D2)
58~62HRC
Titanium Nitride Coated



Product Code	W 0 -.0005	T ±.001	A ±.001	B ±.001	C	D1 ±.0003 0	D2 0 -.0003	H	R1	Pocket Radius	R2	S ±.010	S1 ±.010	SHCS
CSL37	1.0000	0.375	1.125	0.875	0.53	0.5000	0.4999	1.37	0.22	3/16	0.06	0.250	0.500	#10-32 x 1/2"
CSL49	1.2500	0.490	1.125	0.875	0.66	0.5000	0.4999	1.50	0.22	3/16	0.06	0.250	0.750	#8-32 x 5/8"
CSL50C	1.5000	0.500	0.875	0.875	0.56	0.5630	0.5629	1.40	0.22	3/16	0.06	0.250	1.000	#8-32 x 5/8"
CSL50	2.0000	0.500	1.375	0.875	0.66	0.7500	0.7499	1.50	0.28	3/16	0.06	0.312	1.376	#10-32 x 5/8"
CSL75	3.0000	0.750	1.875	0.750	1.13	1.2500	1.2499	1.96	0.53	1/4	0.12	0.375	2.250	1/4-20 x 3/4"
CSL100	4.0000	1.000	2.375	1.375	1.25	1.5000	1.4999	2.59	0.53	1/2	0.12	0.500	3.000	3/8-16 x 1"
CSL125	5.0000	1.250	2.875	1.375	1.63	2.0000	1.9999	2.96	0.53	1/2	0.12	0.625	3.750	1/2-13 x 1 1/4"
CSL150	6.0000	1.500	2.875	1.375	1.75	2.5000	2.4999	3.09	0.53	1/2	0.12	0.625	4.750	1/2-13 x 1/2"

Material Standard

Product Code	T +.00 -.05	W +.00 -.01	A +.00 -.05	B +.00 -.05	C	D .002/.005 Clearance Per Side	H +.0.0 -.0.1	R Pocket Radius	S1 ±.25	S2 ±.25	SHCS
HCSLM50	16	50	21.5	21.5	12	17	43	5	8	11	M6-1.0x18
HCSLM75	19	75	36	36	17	25	72	5	12.5	18	M10-1.5x20
HCSLM100	19	100	45	45	23	35	90	5	15	22	M10-1.5x20
HCSLM125	25	125	45	45	23	35	90	5	20.5	22	M10-1.5x25